



Coast Coho Recovery: From Federal & State Plans to Local Implementation



Presented by: Mark Trenholm, Wild Salmon Center
Oregon Fish & Wildlife Commission
April 18, 2025

Our Mission



The mission of Wild Salmon Center (WSC) is to promote the conservation and sustainable use of wild salmon ecosystems across the Pacific Rim. We identify science-based solutions to sustain wild salmonids and the human communities and livelihoods that depend on them.



Where We Work



Overview

- Origin of the Coast Coho Partnership and the Coho Strategic Action Plans (SAPs)
- SAPs: Focus Work. Accelerate Funding.
- Status and Next Steps



OC Coho

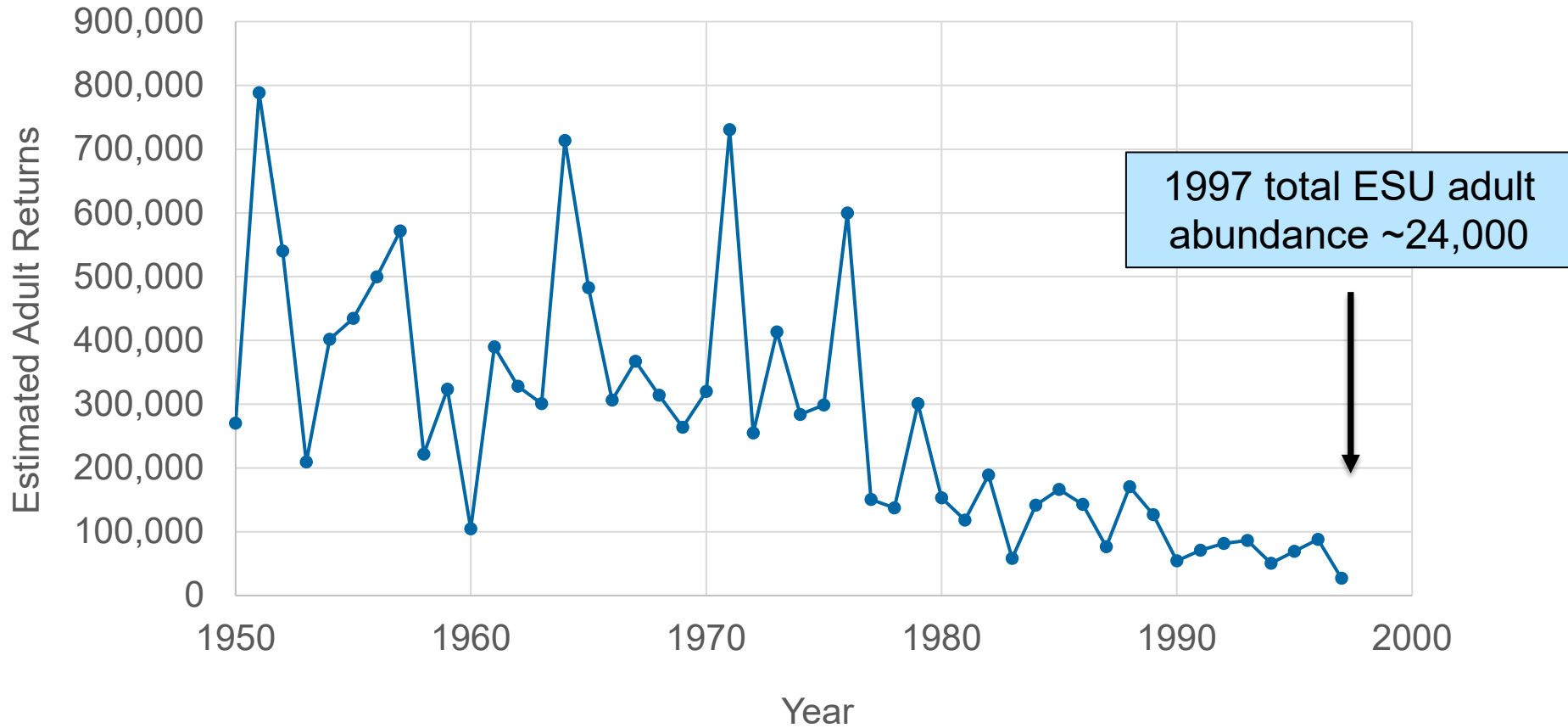
Oregon Coast Coho ESU Strata

- North Coast
- Mid-Coast
- Lakes
- Umpqua
- Mid-South Coast



- 21 Independent populations between Cape Blanco and the Columbia River
- 2.8 - 3.3 million annual spawners (pre-European)
- The combined effects of poor ocean conditions, high harvest rates, hatchery influences, and habitat loss led to population declines (Lawson et al., 2007)

Oregon Coast Coho Abundance (1950-1997)



Data aggregated from spawning ground surveys, Winchester Dam counts, and ODFW management reports.

2016 Recovery Plan

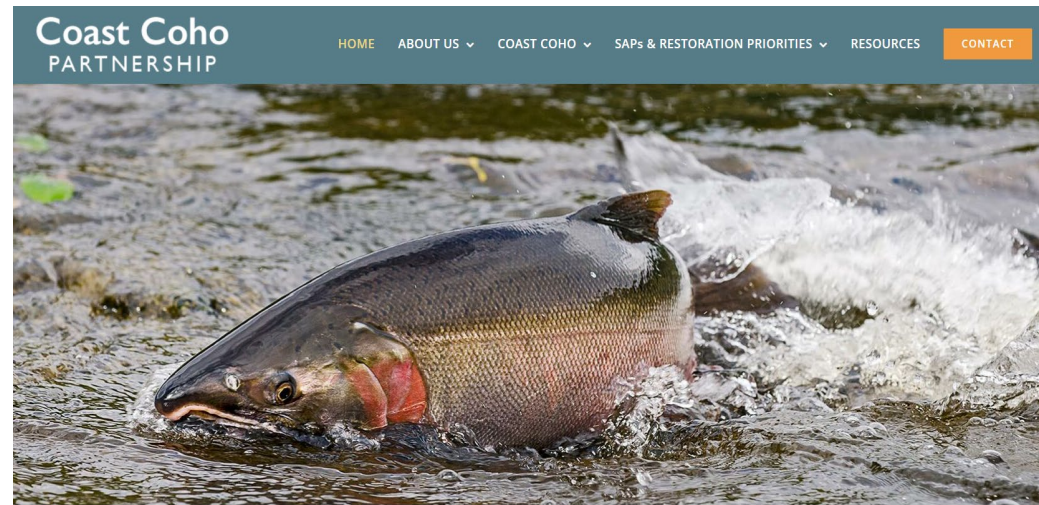
- Listing is driven by NMFS' conclusion that watershed health is declining on the Oregon coast
- The key to recovery is showing improving trends in critical habitats
- This requires:
 - Stronger land use policies
 - *A larger, more focused, and better coordinated restoration effort*



The Coast Coho Partnership



"How can we support local recovery efforts?"



coastcoho.org

Challenges to Local Partners

- Small groups working in large landscapes
- Project selection may be driven by priorities other than science.
- Plans often propose an exhaustive list of possible strategies.
- Scattershot implementation
- Insufficient funding



Challenges to Funders

- Cumulative impacts of local work difficult to roll-up and show returns at scale.
- Federal and state recovery plans often do not identify site-specific actions or prioritize strategies.
- Limited local buy-in to state and fed plans.



Goals



1. Develop a science-driven process for local partnerships to: 1) articulate a shared long term recovery strategy, and 2) identify short term project priorities.
2. Accelerate the pace, coordination, and impact of local habitat protection and restoration efforts.

The Coho Strategic Action Plans



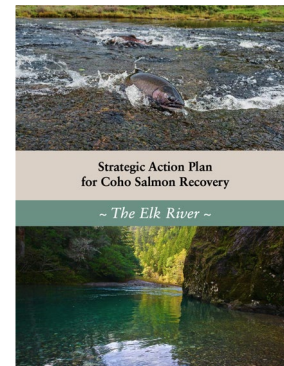
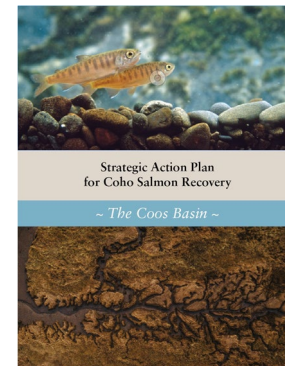
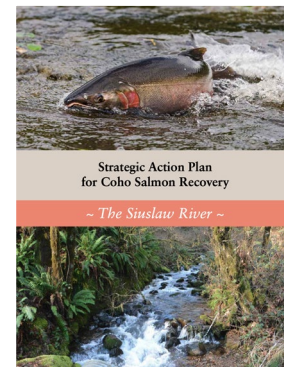
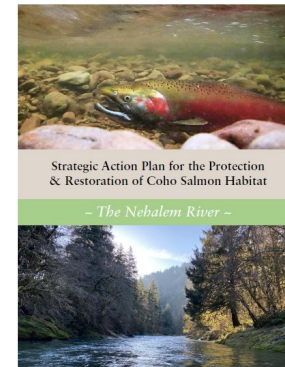
Three Pilot SAPs

- OWEB funded
- Circulated an LOI to all coastal partnerships
- Selected the Elk, Siuslaw, and Nehalem basins
- Provided \$25k to each group



Selected SAP Principles

1. Focus on a single population/watershed
2. A local convenor brings together all of the local players (WSC facilitates)
3. Plans operate at short and long-term scales.
 - Articulate long-term goals and strategies focused on improving habitat function
 - Identify short-term project priorities (~5 years)



Watershed Functions and Projects

Longitudinal Connectivity

- Culvert removal
- Culvert upgrade
- Tidegate removal

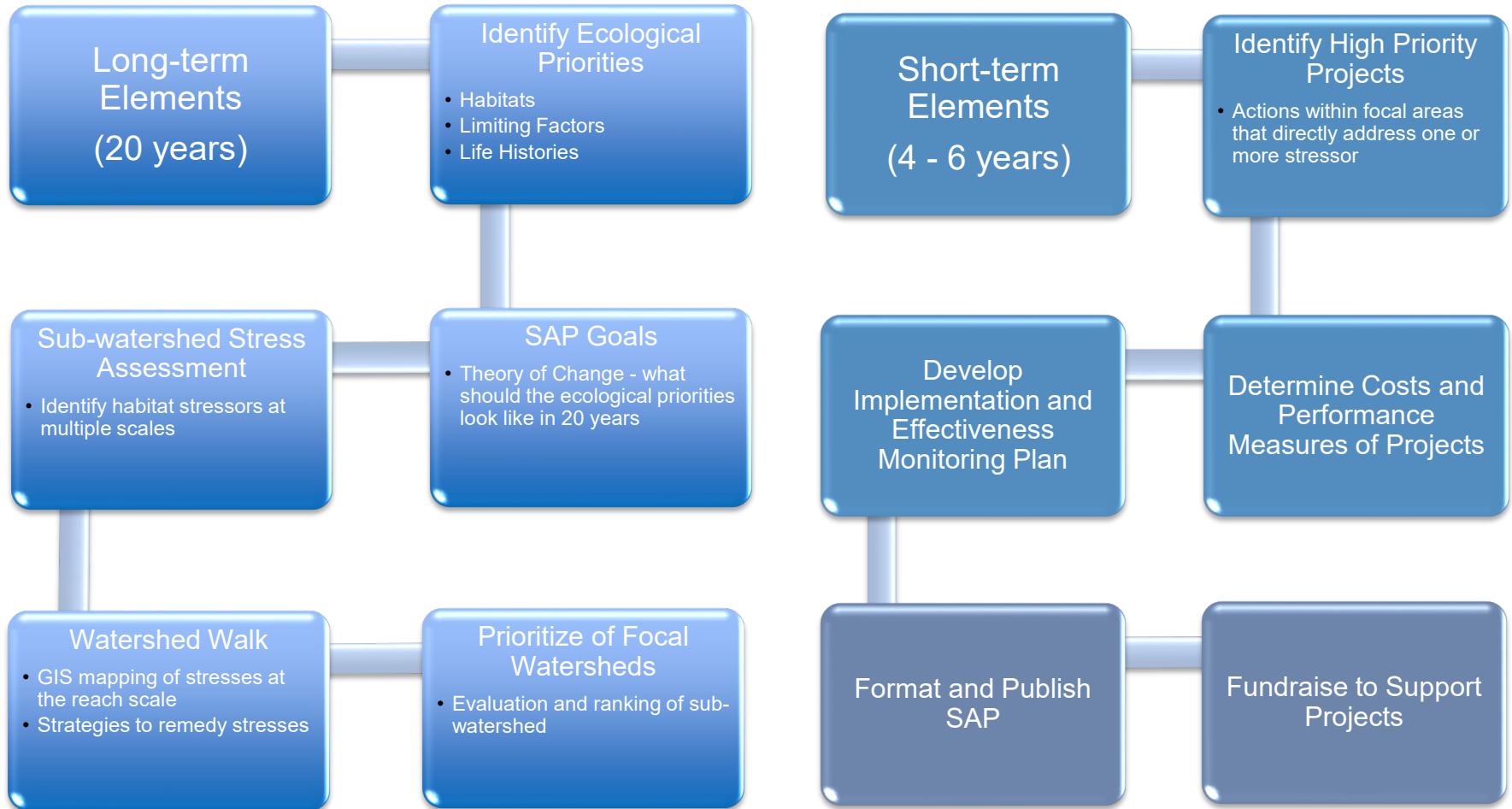
Lateral Connectivity

- Large wood installation
- Stream re-meander
- Boulder installation

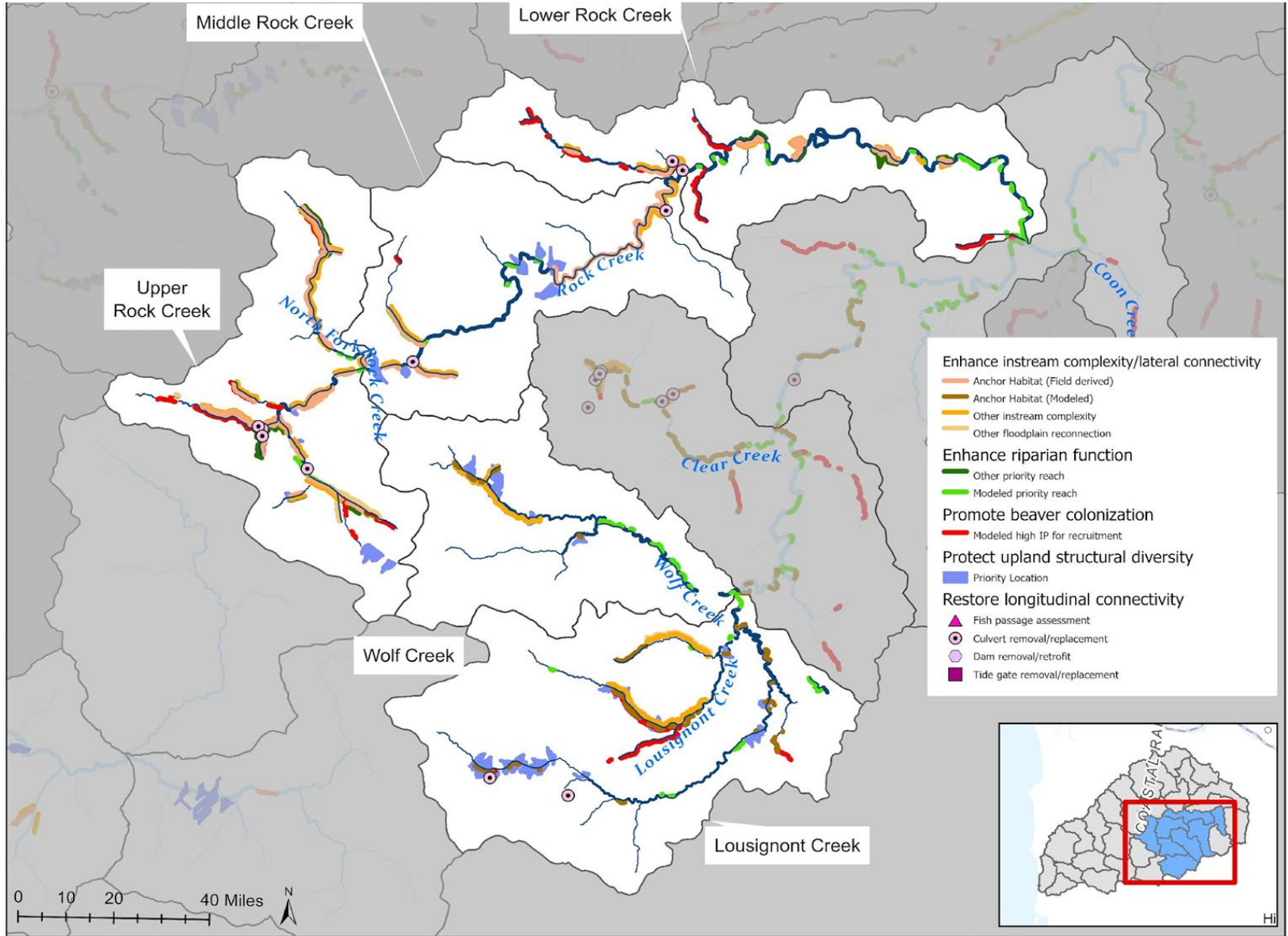
Riparian Function

- Planting
- Tidegate upgrade
- Dam removal
- Off-channel reconnection
- Bank scalping
- Beaver dam analogues
- Fencing
- Invasives removal

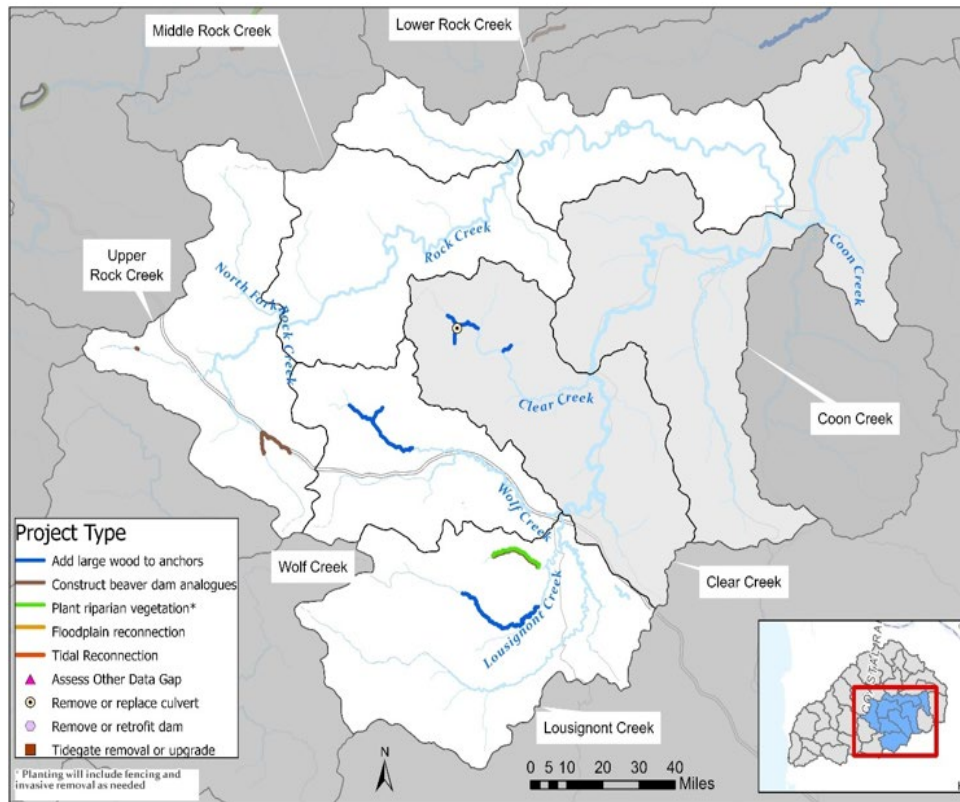
SAP Process



The 30 Year Roadmap



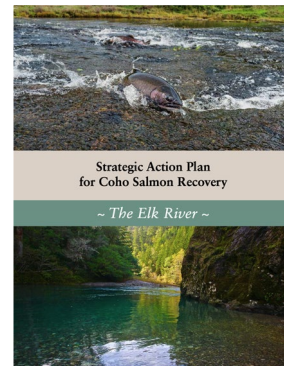
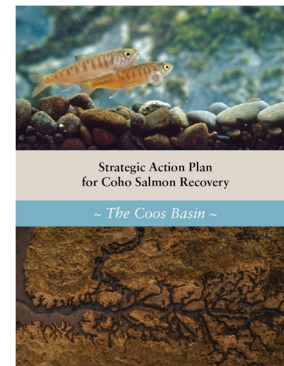
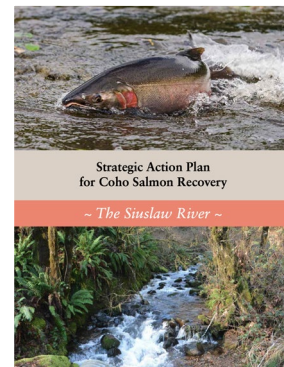
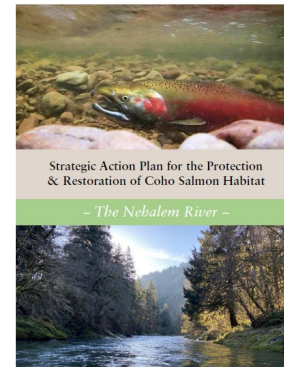
5 Year Action Plans



Focal Area	Restoration Project	Lead (landowner)	Project Start		
			22 - 23	24 - 25	26 - 27
Rock - Lousignont - Wolf	Upper Lousignont LWD	UNWC (ODF)	X		
	Wolf Creek LWD	UNWC (ODF)		X	
	BDA augmentation	UNWC (ODF)		X	
	Highway 26 culvert (feasibility)	UNWC (ODF)			X
Humbug - Fishhawk - Beneke	Fishhawk dam passage	UNWC (private)		X	
	Big Creek LWD	UNWC (Weyerhaeuser)		X	
	Fishhawk and Boxler Creek LWD	UNWC (ODF)		X	
	Beneke Creek LWD / riparian	UNWC (ODF)	X		
	Fishhawk riparian	UNWC			X
	Humbug Creek (ODFW refuge)	UNWC (ODFW)			X
Small mainstem / estuary tribs	Tweedle Creek BDA, LWD, riparian (private)	UNWC (private)	X		
	Jetty Creek LWD	LNWC (Greenwood Res)	X		
	Upper Oak Ranch Creek LWD	UNWC (ODF)	X		
	Crawford Creek BDA - direct	UNWC (ODF)	X		
	Spruce Run Creek LWD	LNWC (ODF Clatsop)		X	
	Fall Creek LWD	UNWC (ORM Timber)		X	
	Neah-Kah-Nie Creek LWD	LNWC (Private)		X	
	Spruce Run Confluence LWD	LNWC (ODF)			X
	Cook Creek confluence LWD	LNWC (State Parks)			X
	Fall Creek fish passage	UNWC (ORM Timber)			X
	Hamilton Creek LWD	UNWC (ODF)			X
	O'Black Creek LWD	UNWC (private)			X
	Dass Creek LWD	UNWC (private)			X
	Highway 47 culverts (feasibility)	UNWC (private)			X
North Fork Nehalem	Grand Rapids Creek LWD & BDA	LNWC (Greenwood Res)	X		
	Coal Creek riparian planting	LNWC (private)	X		
	Gravel Creek LWD	Stimson Timber			X
	Soapstone Creek LWD	LNWC (ODF Clatsop)		X	

SAP Principles

1. Focus on a single population/watershed
2. A local convenor brings together all the local players (WSC facilitates)
3. Plans operate at short and long-term scales.
 - Articulate long-term goals and strategies focused on improving habitat function,
 - Identify short-term project priorities (~5 years)
4. When the SAP is complete, partners work cooperatively to secure funding around a suite of coordinated projects



Accelerate Funding

- OWEB FIPs = **\$23 million**
- WSC sub-awards = **\$18.2 million** (\$14.3 NOAA and \$3.9 NFWF)
- OWEB and other project grants



Outcomes (WSC funds only)

- 55 miles of reconnected streams
- 300 acres of enhanced instream complexity
- 280 acres of tidal wetlands reconnected
- 1,110 acres of riparian enhancement



SAPs Completed and Underway



Strategic Action Plan for the Protection & Restoration of Coho Salmon Habitat

~ The Nehalem River ~



Strategic Action Plan for Coho Salmon Recovery

~ The Siuslaw River ~



Strategic Action Plan for Coho Salmon Recovery

~ The Coos Basin ~



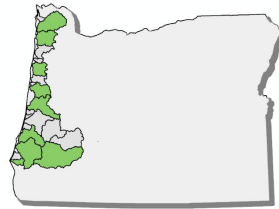
Strategic Action Plan for Coho Salmon Recovery

~ The Elk River ~



Oregon Coast Coho Strategic Action Plans

 Completed or In-Progress



50

Miles



Next Steps

“Out of 28 salmonids listed under the Endangered Species Act on the west coast, threatened Oregon Coast coho salmon is one of the closest to recovery.”

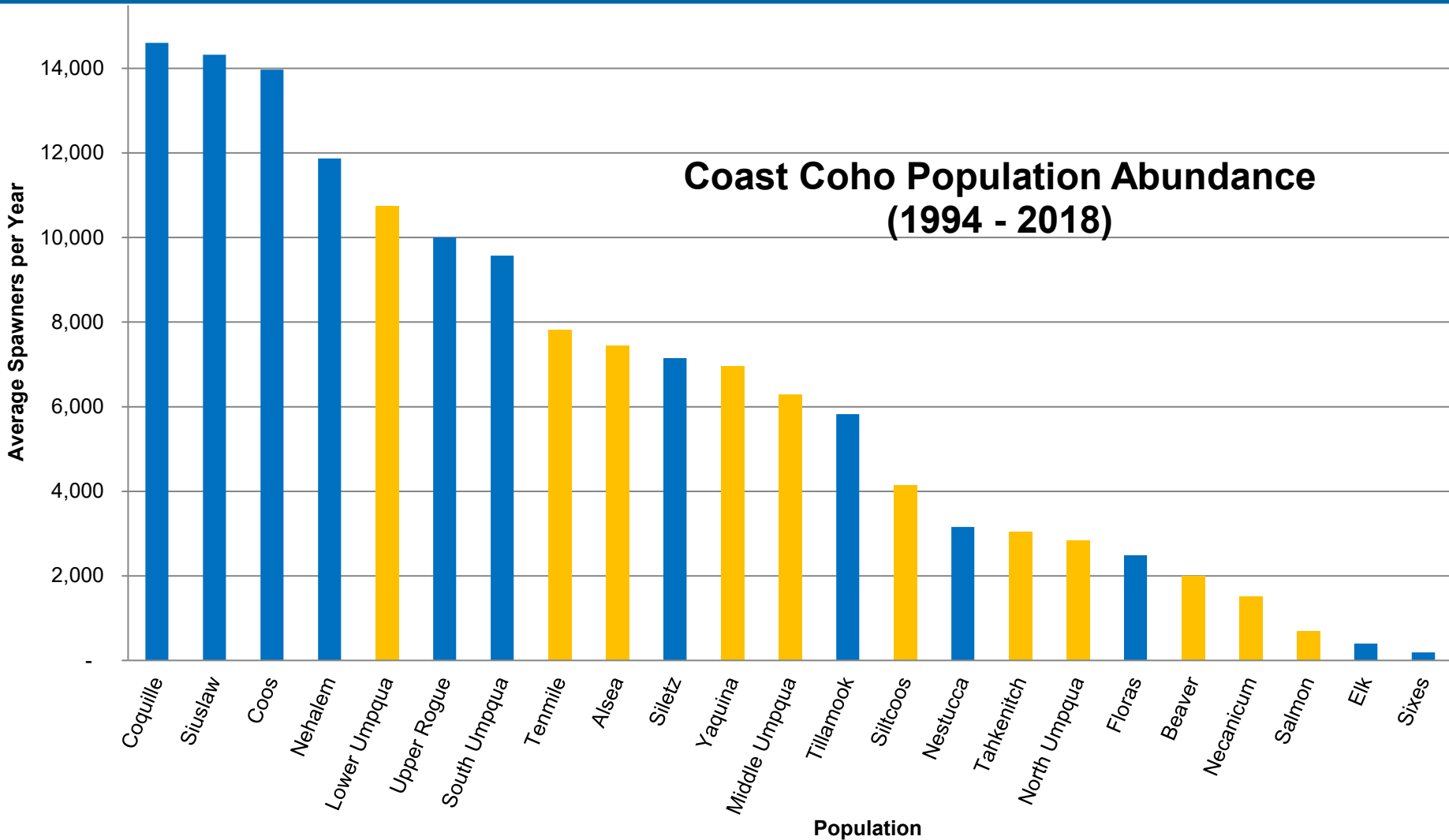
~ NOAA Fisheries 2024

Next Steps

- Continue writing and funding SAPs.



Next Steps



Next Steps

- Continue writing and funding SAPs.
- Work with NOAA and the State to articulate a path to de-listing. Fund monitoring and ODFW positions.
- Transition leadership of the Coast Coho Partnership to the State of Oregon.
- Ensure federal support for HCPs.



Questions

